

KATALOG

Otázka č. 2 Ochrana zboží obalem

Obrazová příloha



Funkce obalů?



Význam

zákona
477 / 01 Sb?

Povinnosti

vyplývající ze zákona
477 / 01 Sb?



Výrobce

Dovozce

Plnič

Prodejce

**Na které
subjekty
se vztahuje
zákon
477/01 Sb?**



**Jak funguje
systém
sdruženého
plnění
zákona?**

EKO**KOM**

**Komu se uhradí
poplatek za obal
při exportu do ostatních
evropských států?**

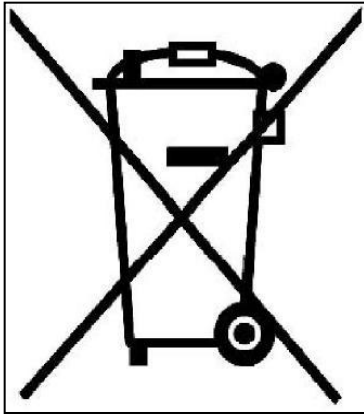


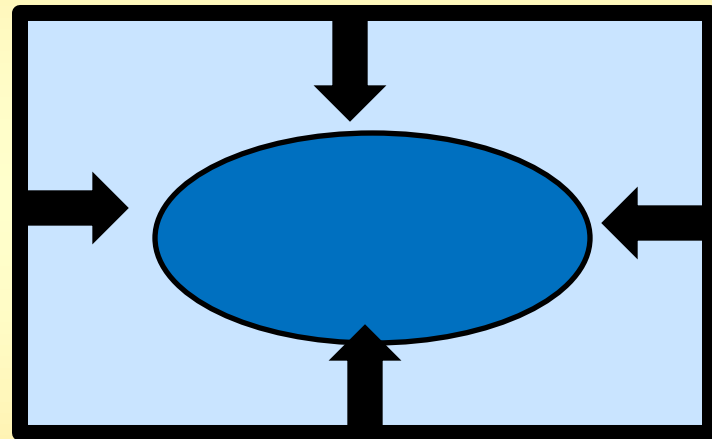
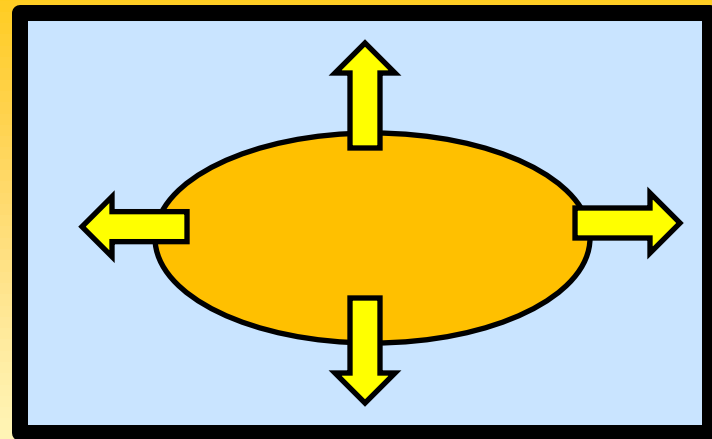
PRO EUROPE

EKO KOM

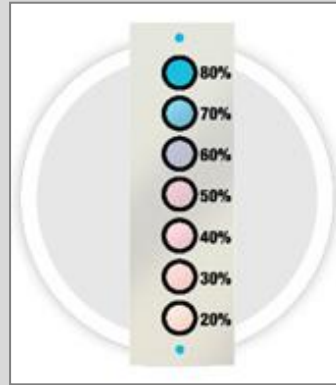


Značky na obalu související se zákonem „O obalech „





Aktivní obaly?



Inteligentní obaly?



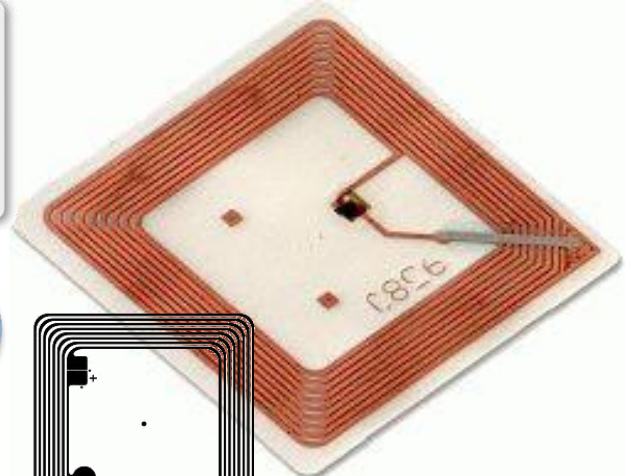
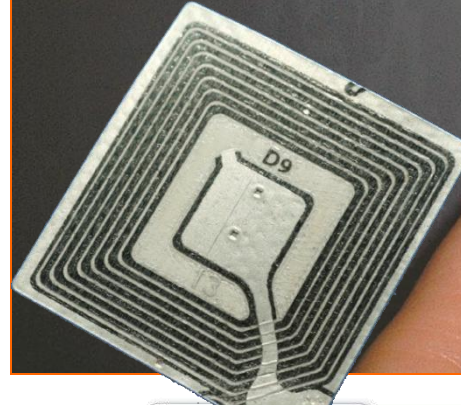
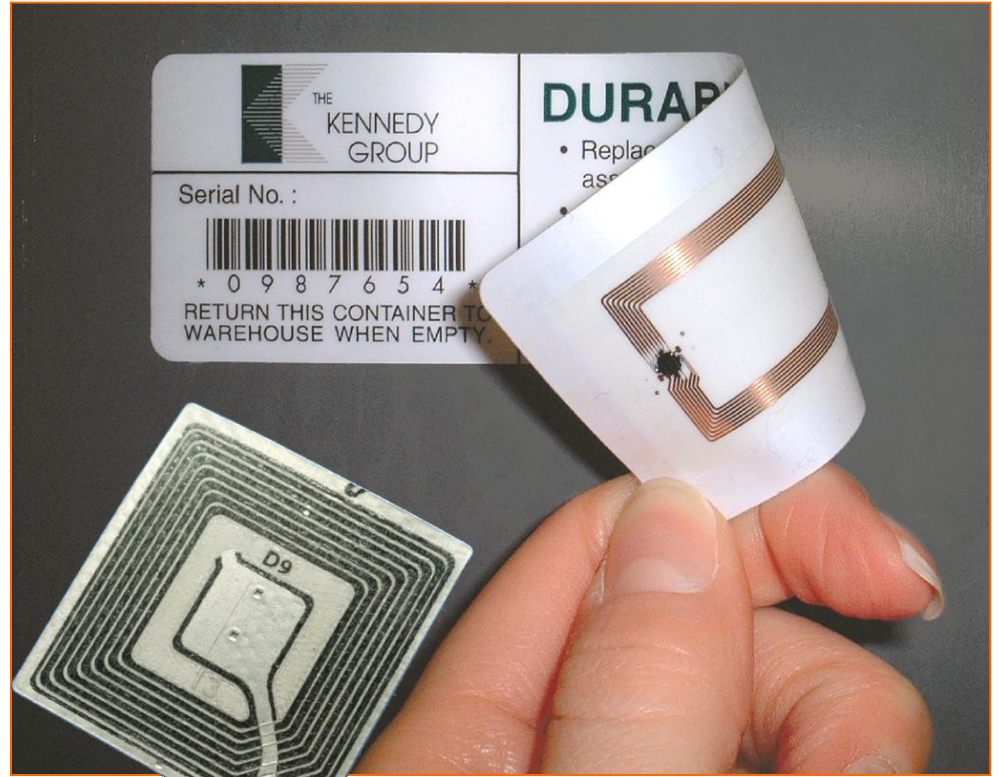
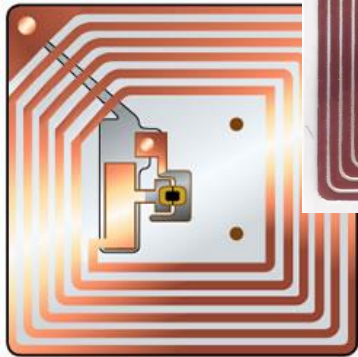


100% kompostovatelné
60 x 74 cm 20 ks/role

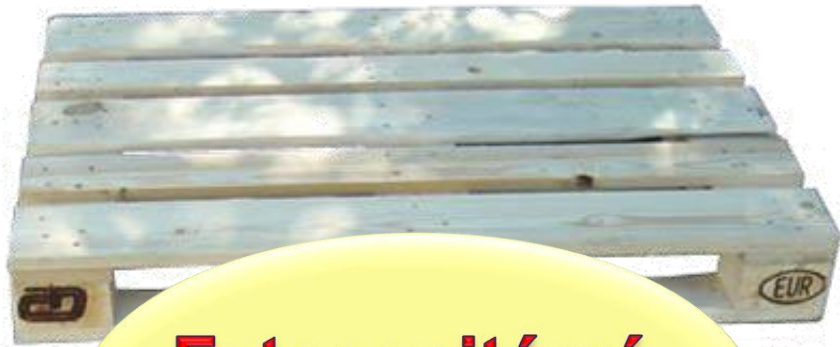


Biodegradovatelné obaly?







RFID ?



Fytosanitární standard EU?

	(d)	(b)
	US - 001	
	MB	INSPECTION AGENCY LOGO
	(c)	(a)



	CZ 000
	HT/KD DB

N

NO a

NO d

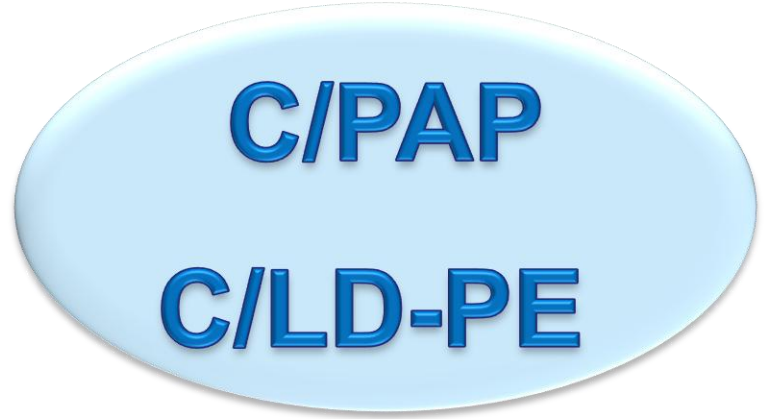
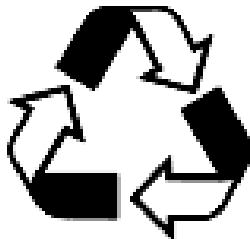
NO e

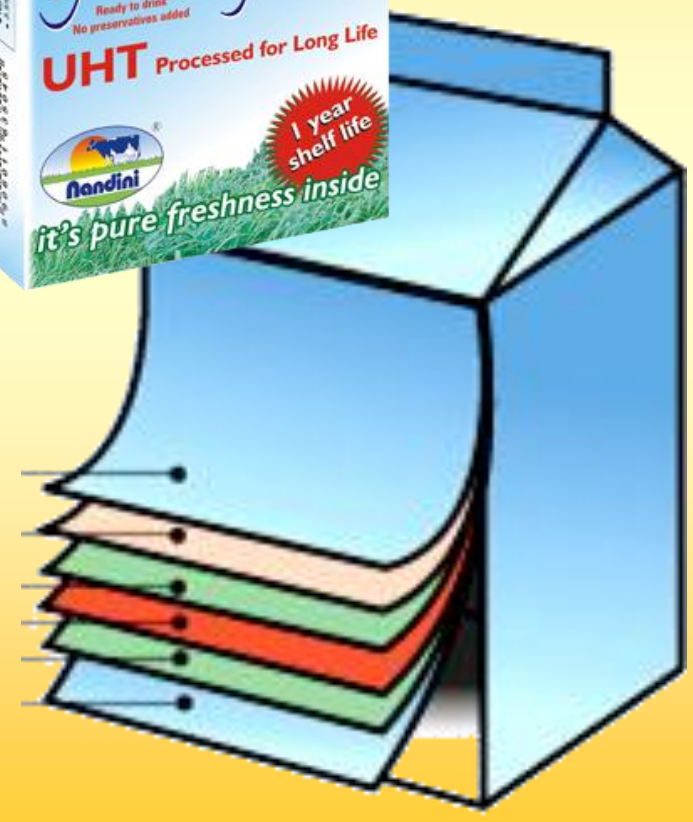
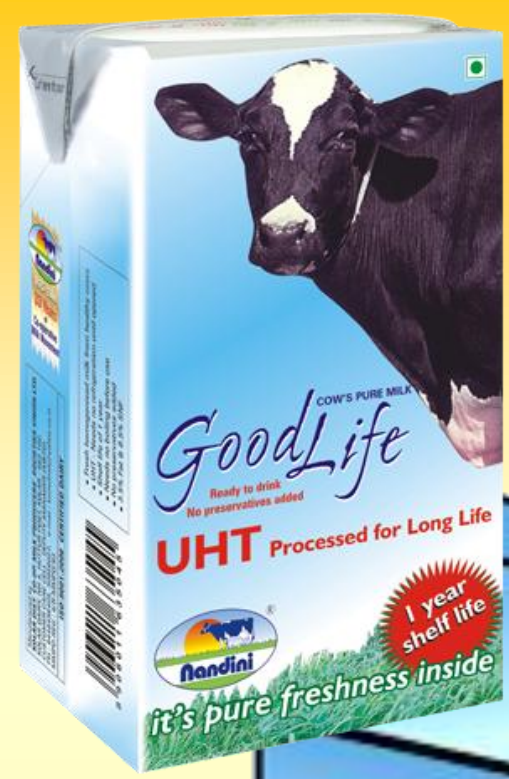
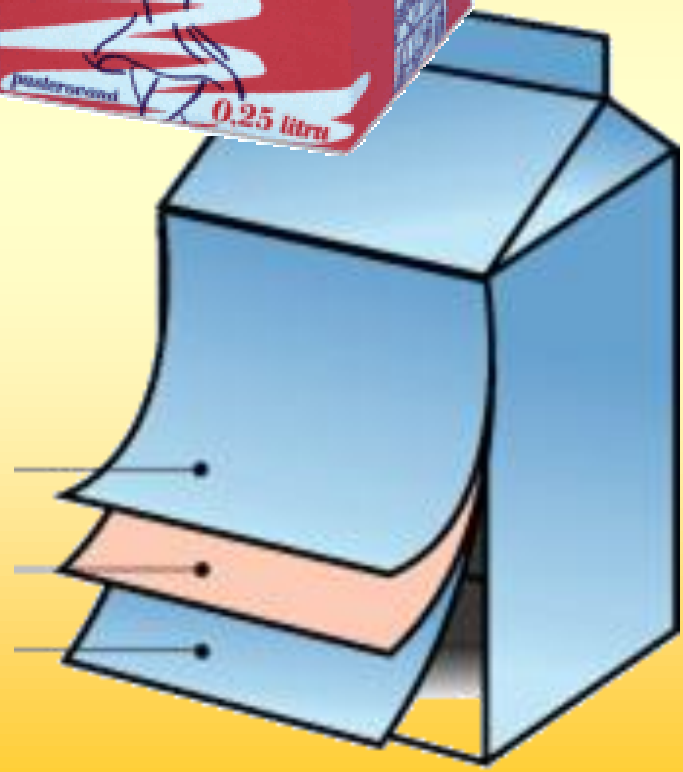
?

**Klasifikace
obalových
materiálů?**

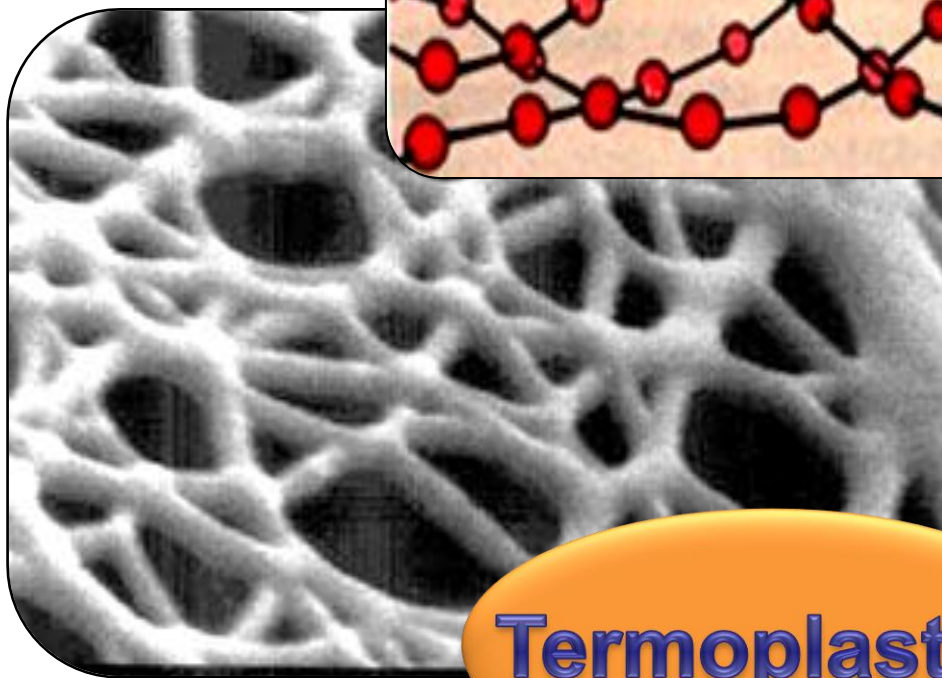
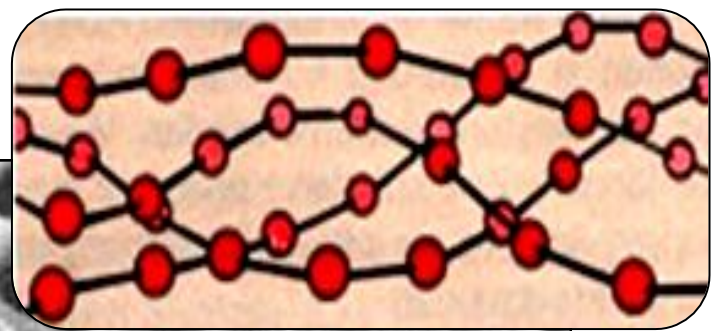
Rizika

**plastových a C/ ... obalů
užívaných pro balení potravin?**









Termoplasty?





Bariérový
efekt ?

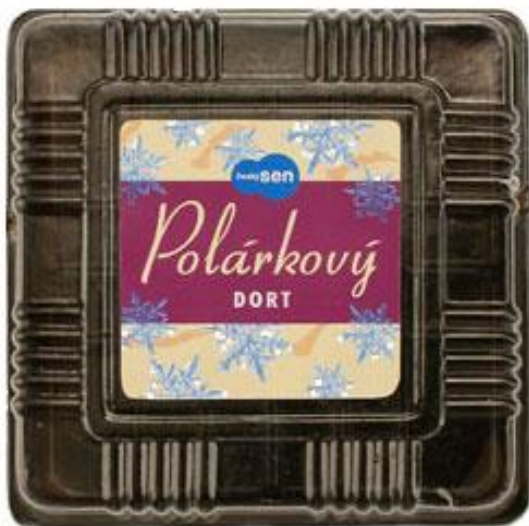
BESTPET
lahve ?

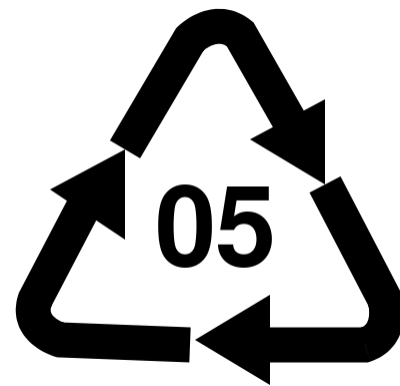




Antiblock?





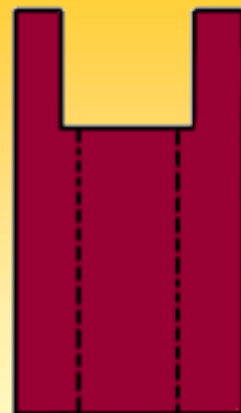






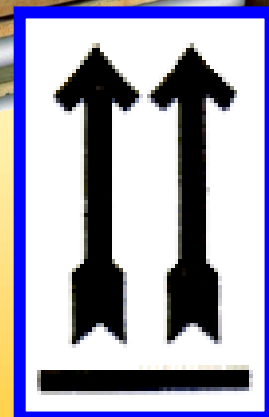
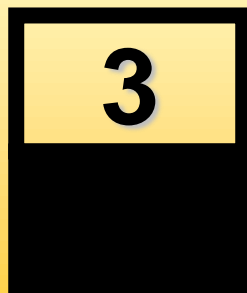
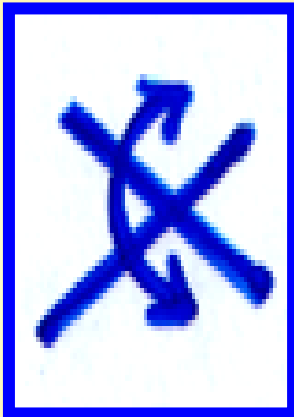
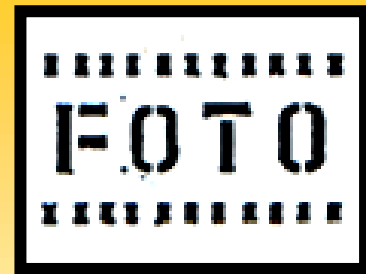
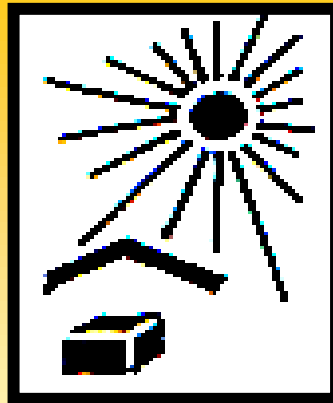
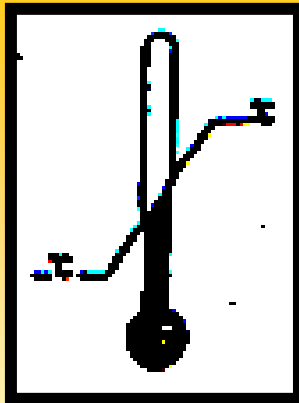
**Pergamenová
náhrada?**







**Bariérové
obaly?**







**Nasvěcování
zboží?**



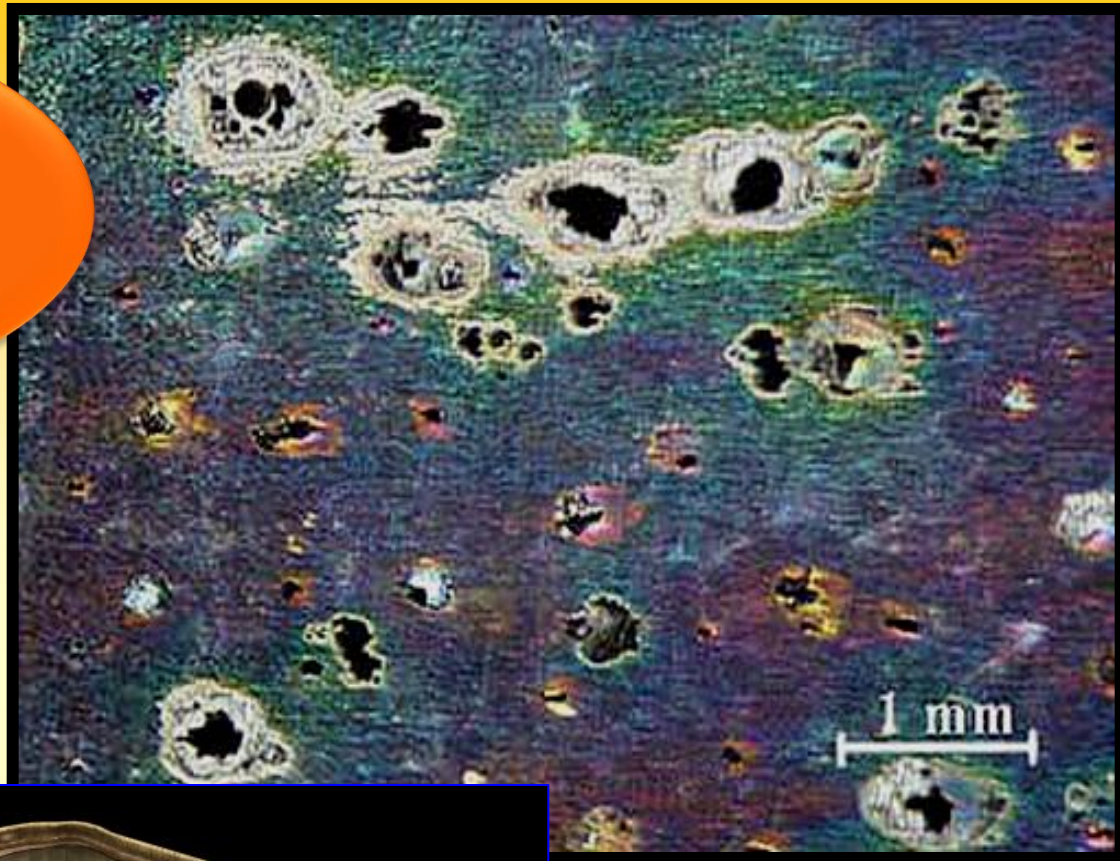
Ra 90



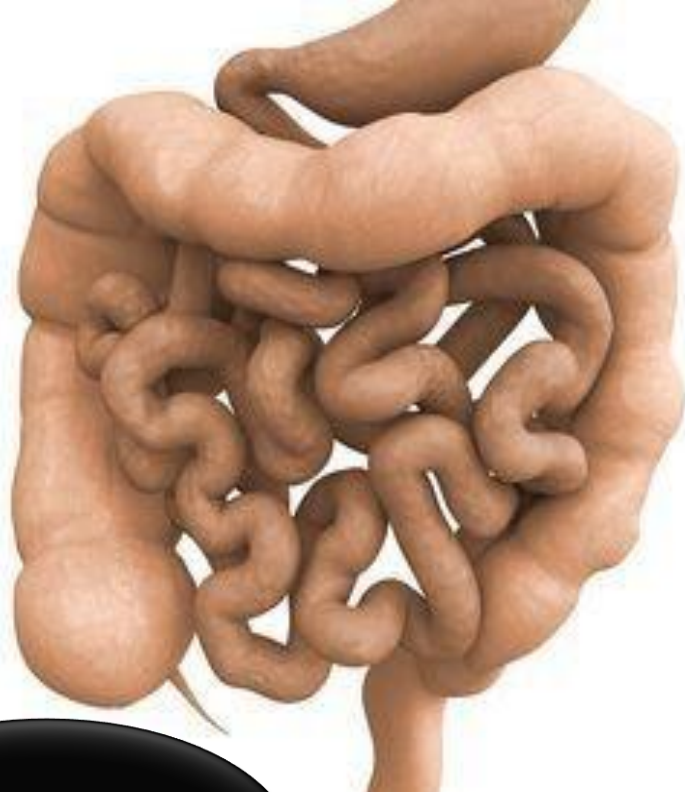
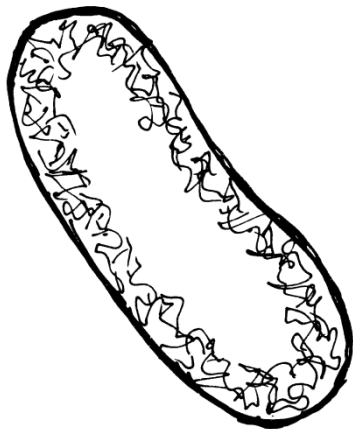
1B



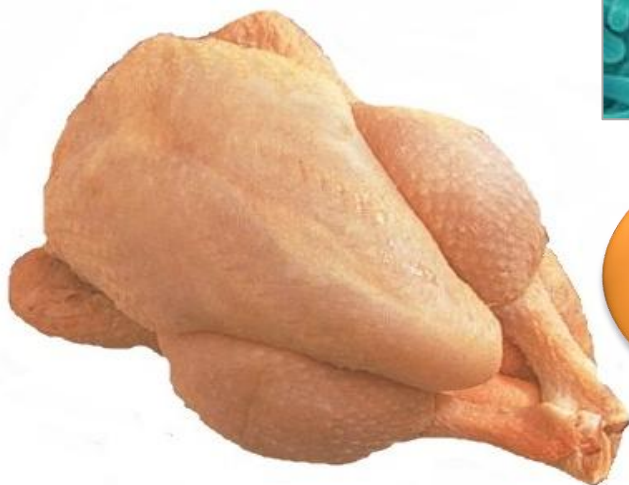
Salinita?



**Elektrochemická
koroze?**



Spory?



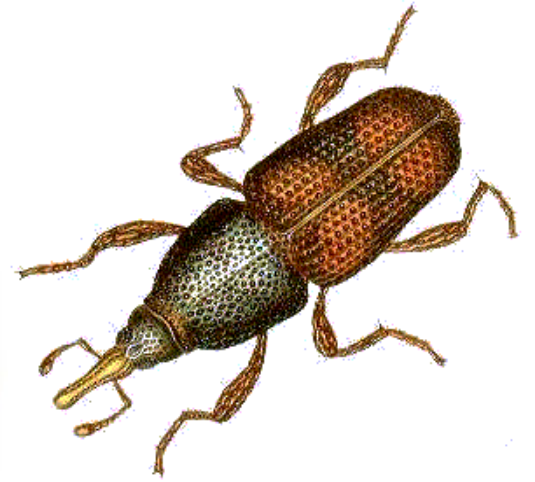
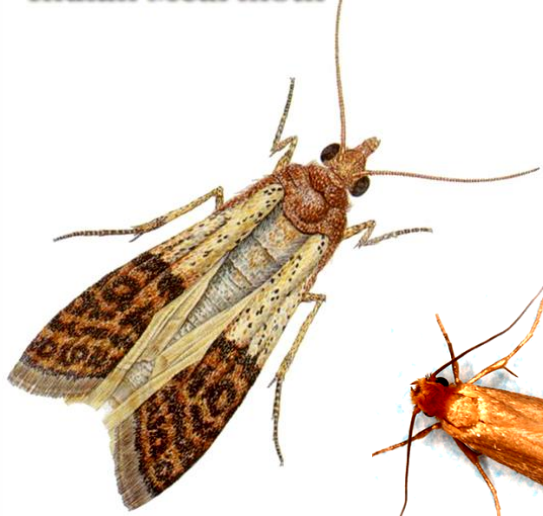
**Alimentární
onemocnění?**





Mykotoxiny?





- 1. Základní funkce obalů**
- 2. Vlivy působící na zboží ve sféře oběhu**
- 3. Rozdělení obalů dle použití a výchozího materiálu**
- 4. Přehled obalových materiálů a zhodnocení jejich vlastností**
- 5. Hodnocení obalů pro potravinářské zboží - hygienické a ekologické hledisko**
- 6. Druhy spotřebitelských obalů**
- 7. Význam grafických symbolů na obalech**