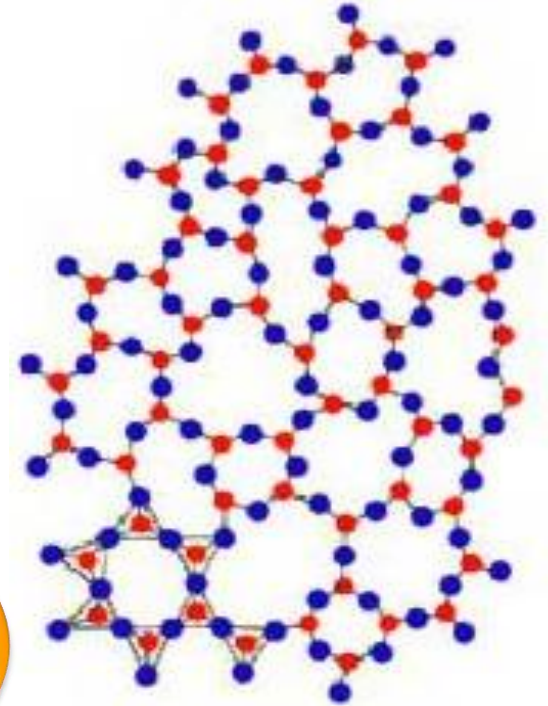
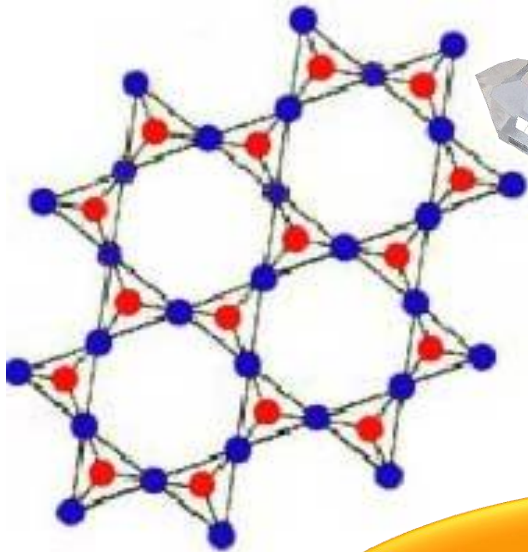


**Sklo  
a sklářské výrobky**

**Testovací svazek**

# Krystalický $\text{SiO}_2$

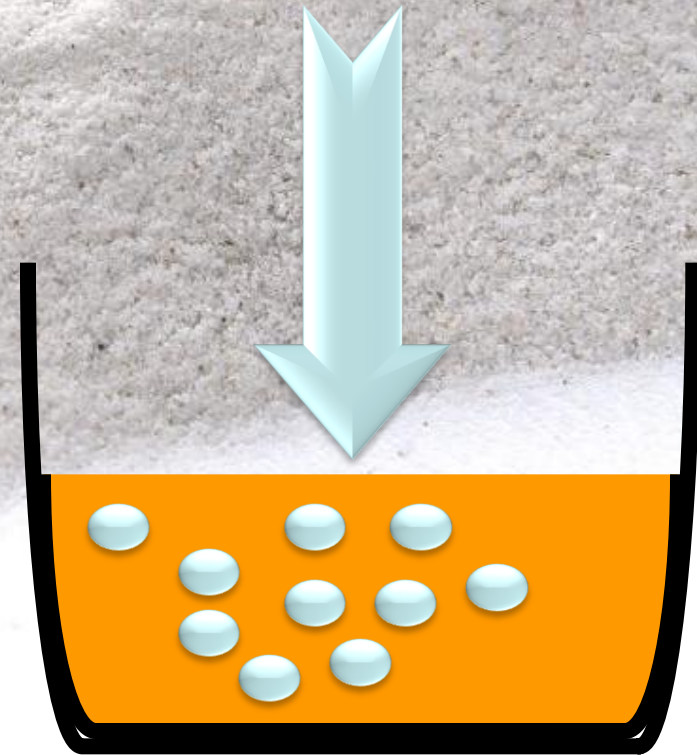
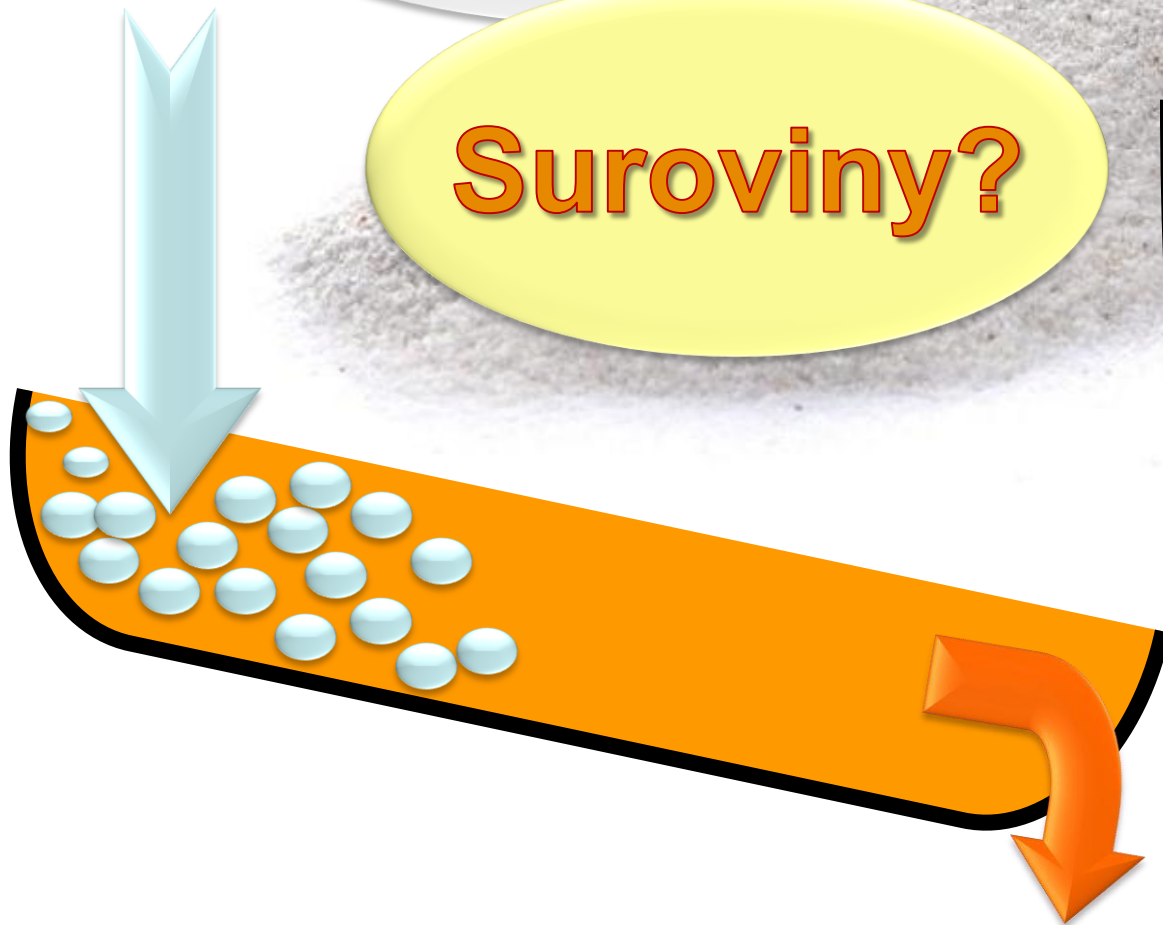
( Křemen )



**Charakteristika  
skla?**

**Zařízení  
na výrobu skla?**

**Suroviny?**

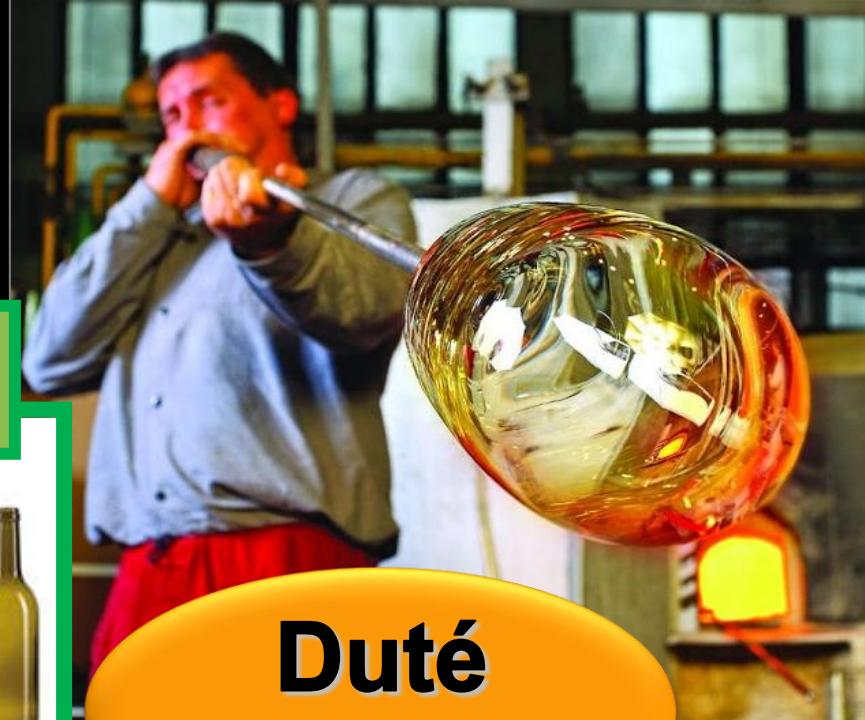




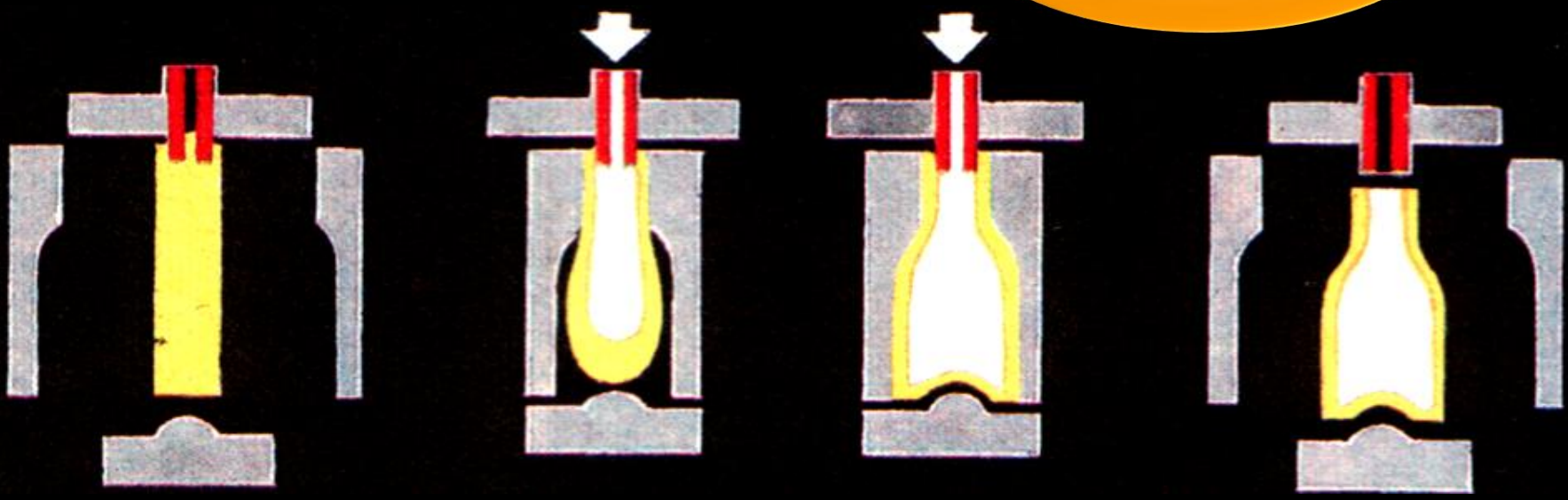


**Druhy skla  
dle složení?**



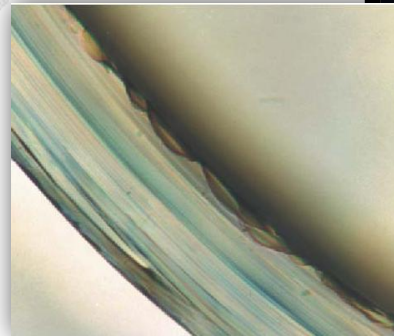


**Duté  
sklo?**



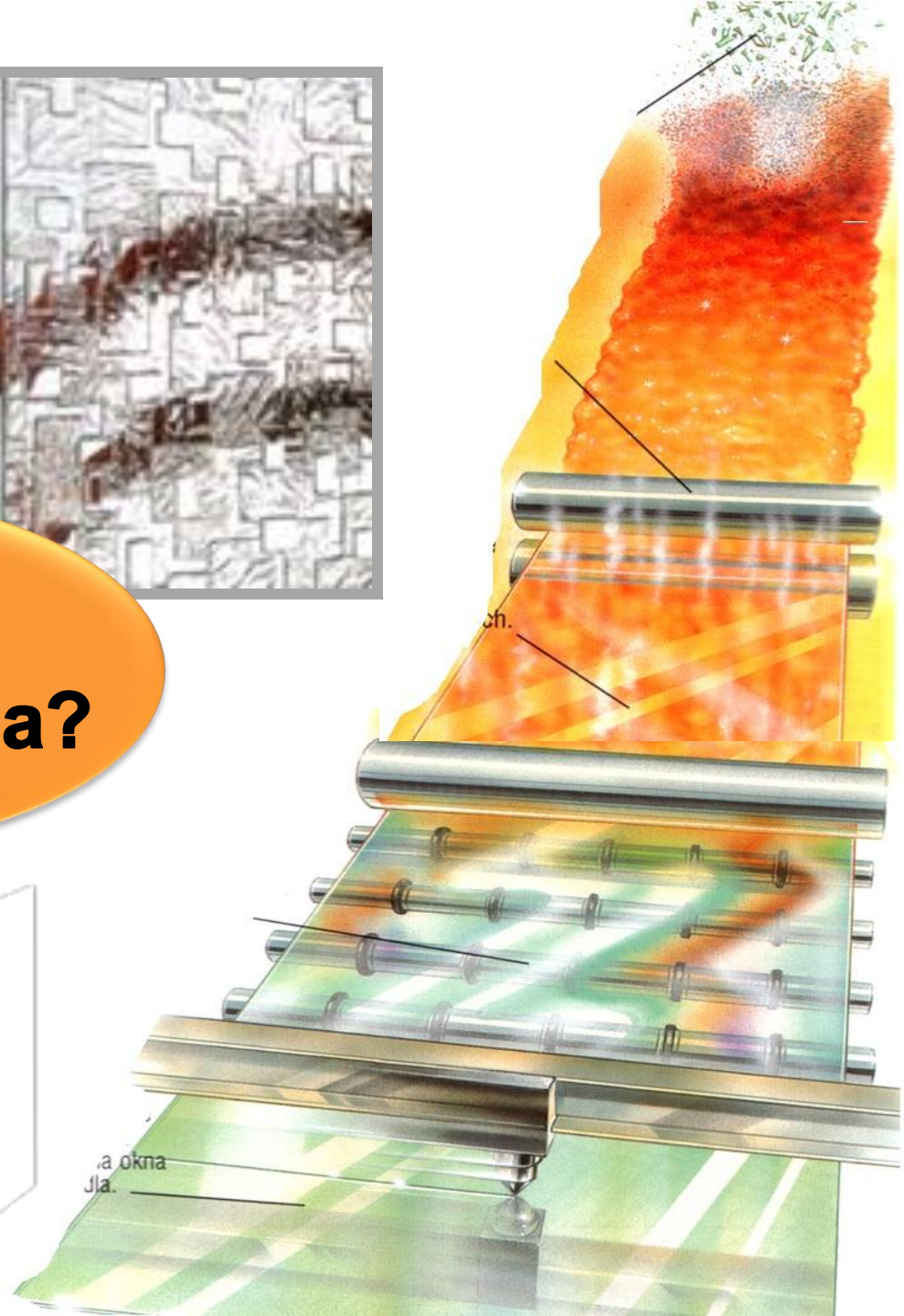
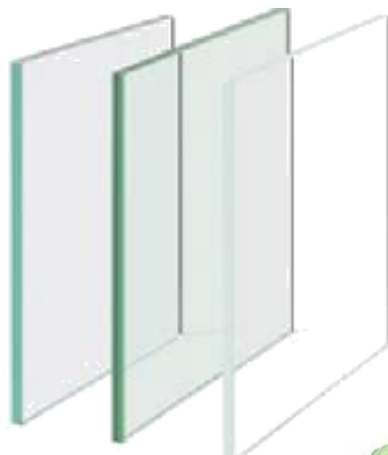


**Chlazení  
skla?**

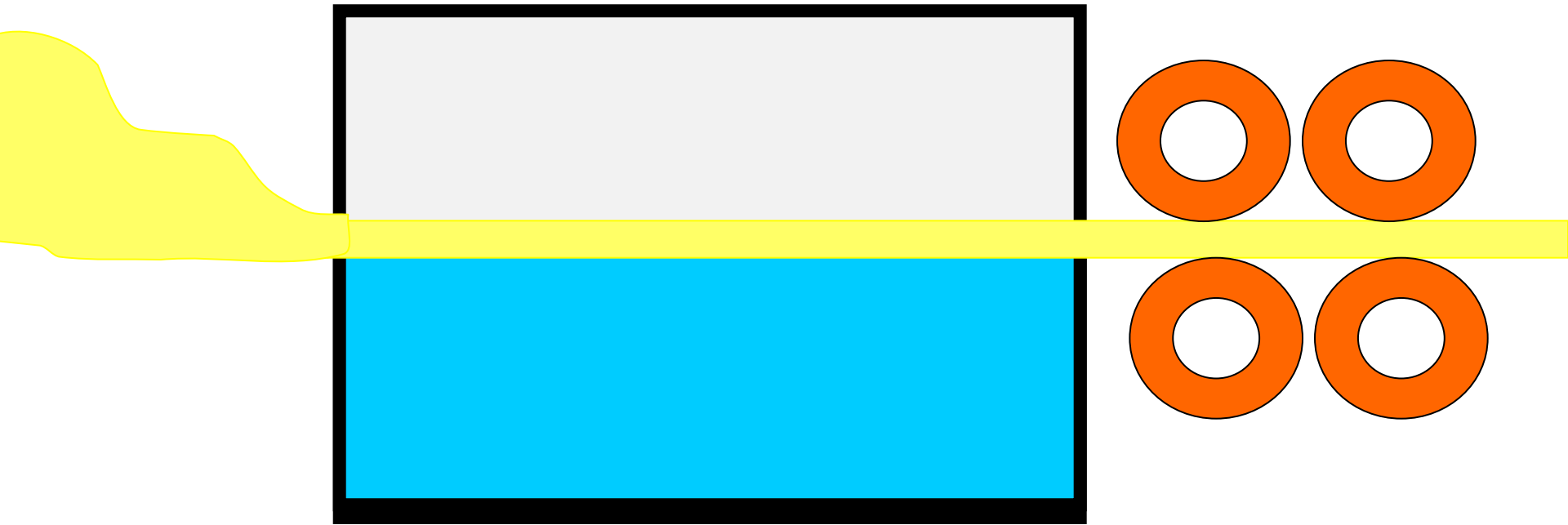
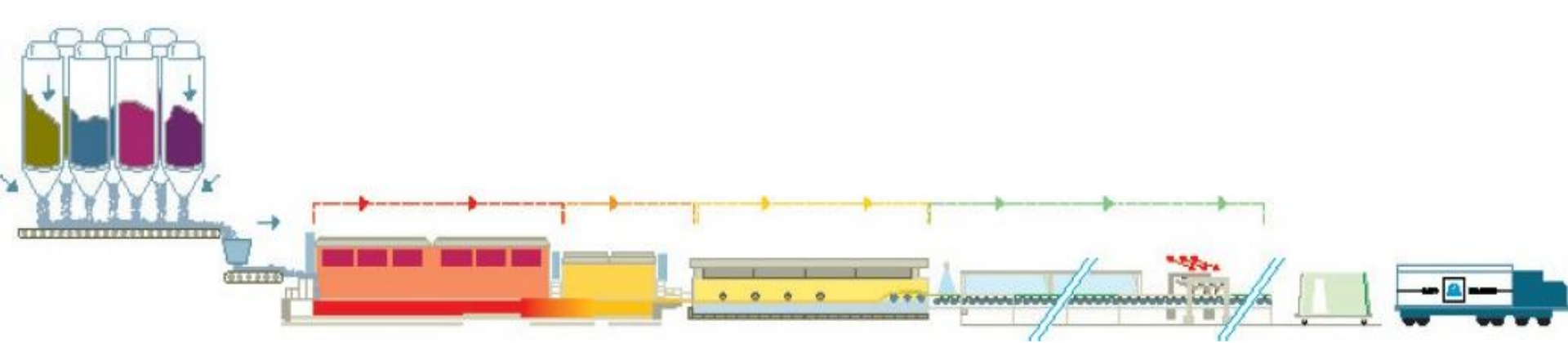




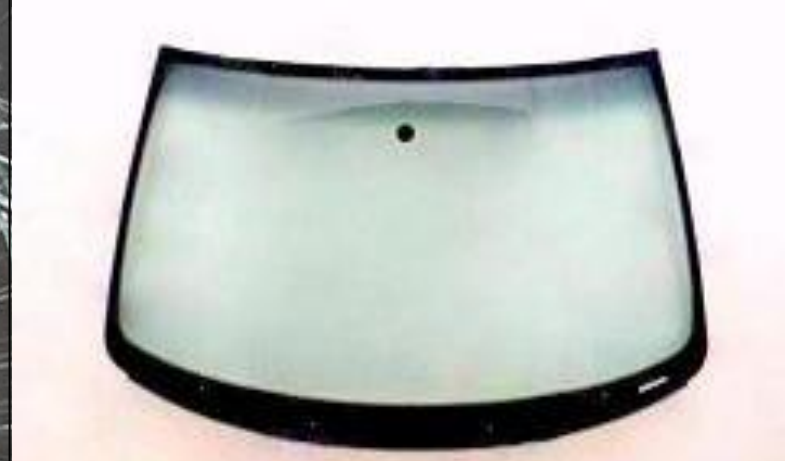
# Výroba plochého skla?

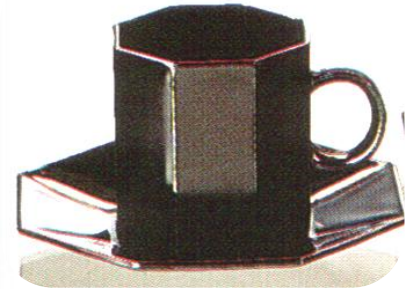
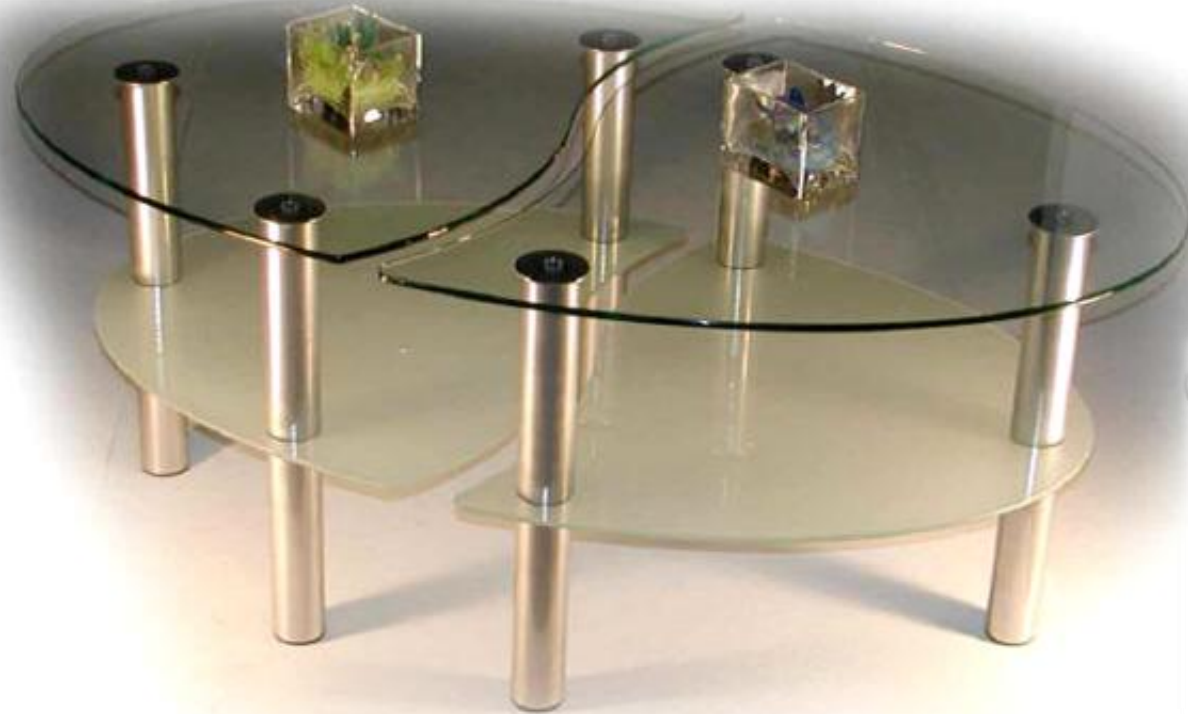


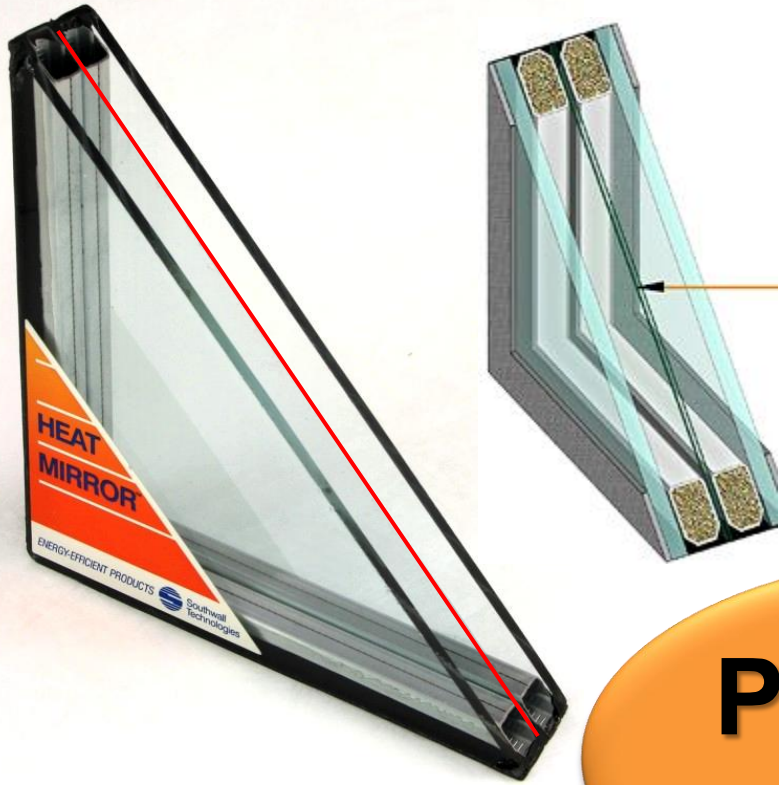




# Progresivní druhy skla?







# Praktický význam?

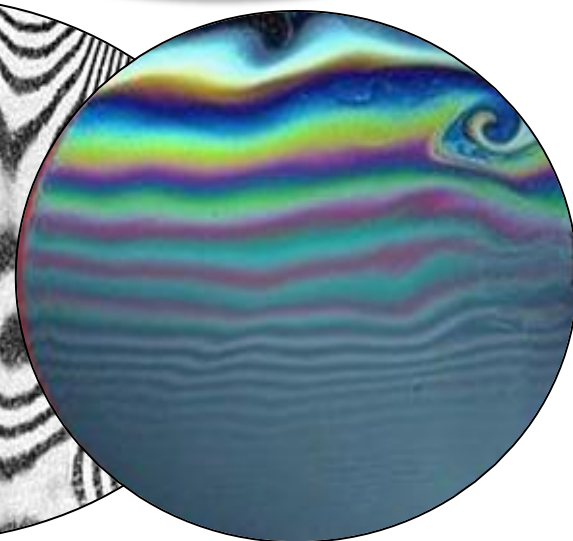
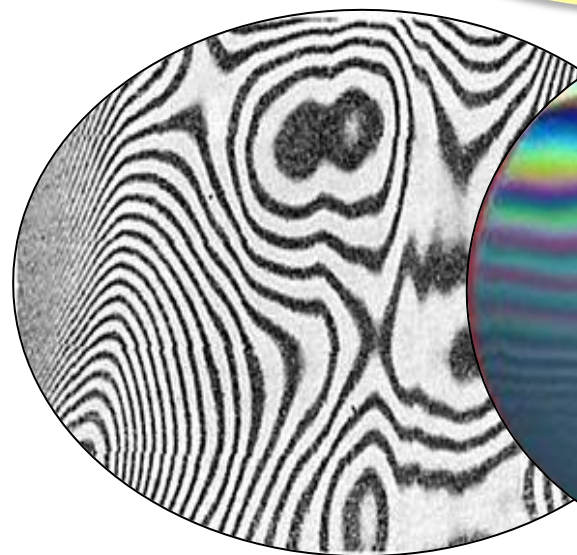






**Vady skla?**

**Výstupní  
kontrola skla?**





# Zásady pro prodej skla?





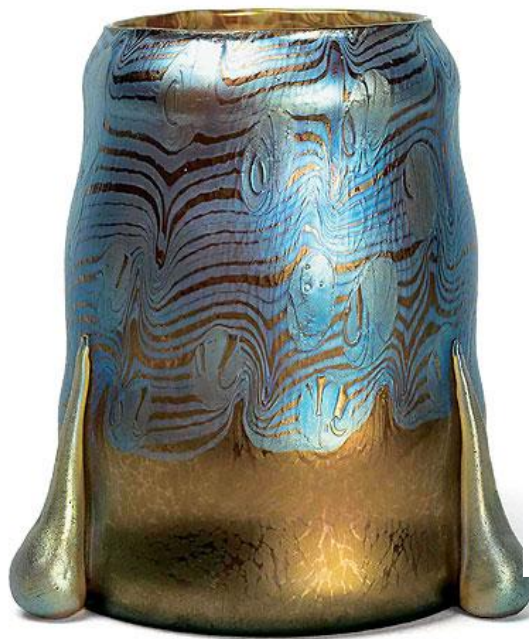


**Kontrola zboží  
při prodeji?**



**Techniky  
zdobení?**



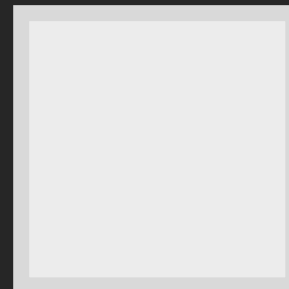
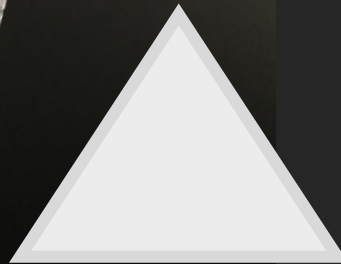




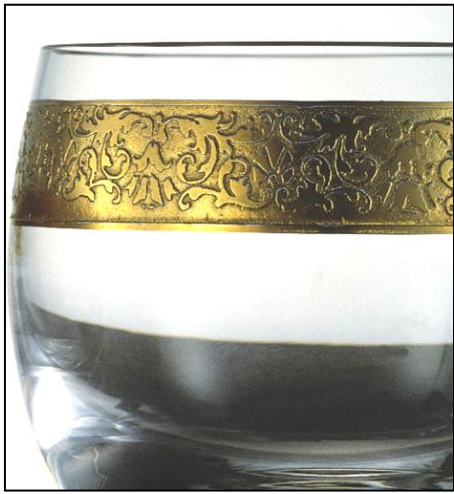
Vlastnosti  
olovnatého  
křišťálu?



# System značení křišťálového skla









# Druhy skla typické pro ČR



*Moser*





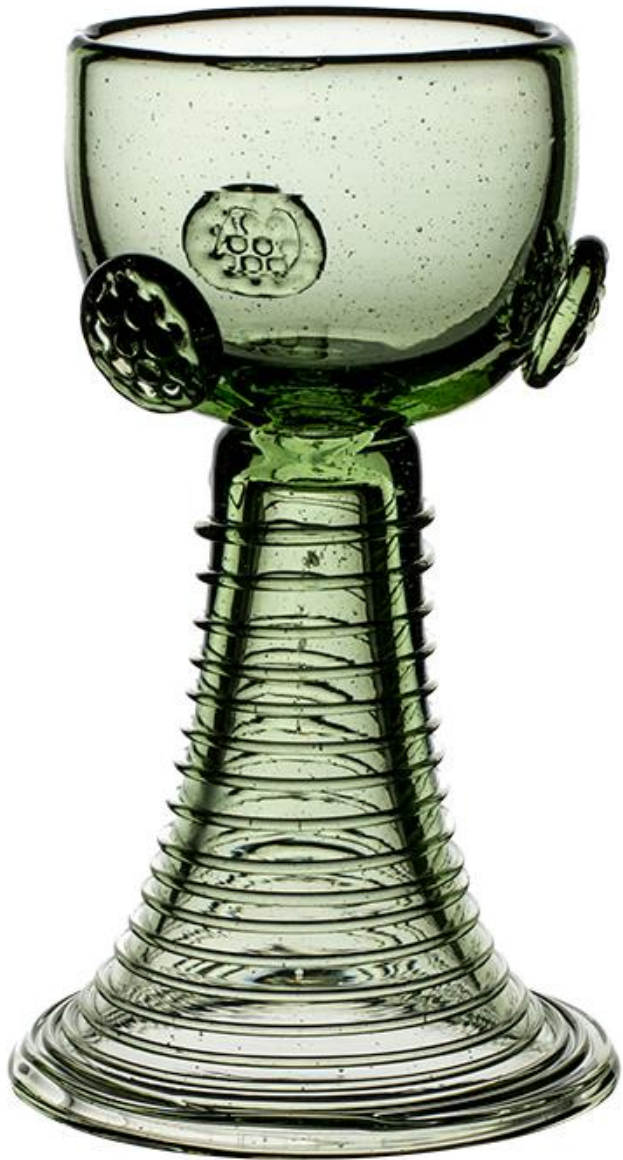




**Nápojové  
sklo?**







- 1. Základní a pomocné suroviny  
na výrobu skla, charakteristika skla**
- 2. Druhy skla dle chemického složení**
- 3. Zpracování skloviny - sklo ploché,  
duté, vlákna**
- 4. Techniky zušlechťování skla**
- 5. Posuzování a označování jakosti skla**
- 6. Druhy skla dle použití**
- 7. Nejznámější druhy skla  
vyráběné v ČR**

